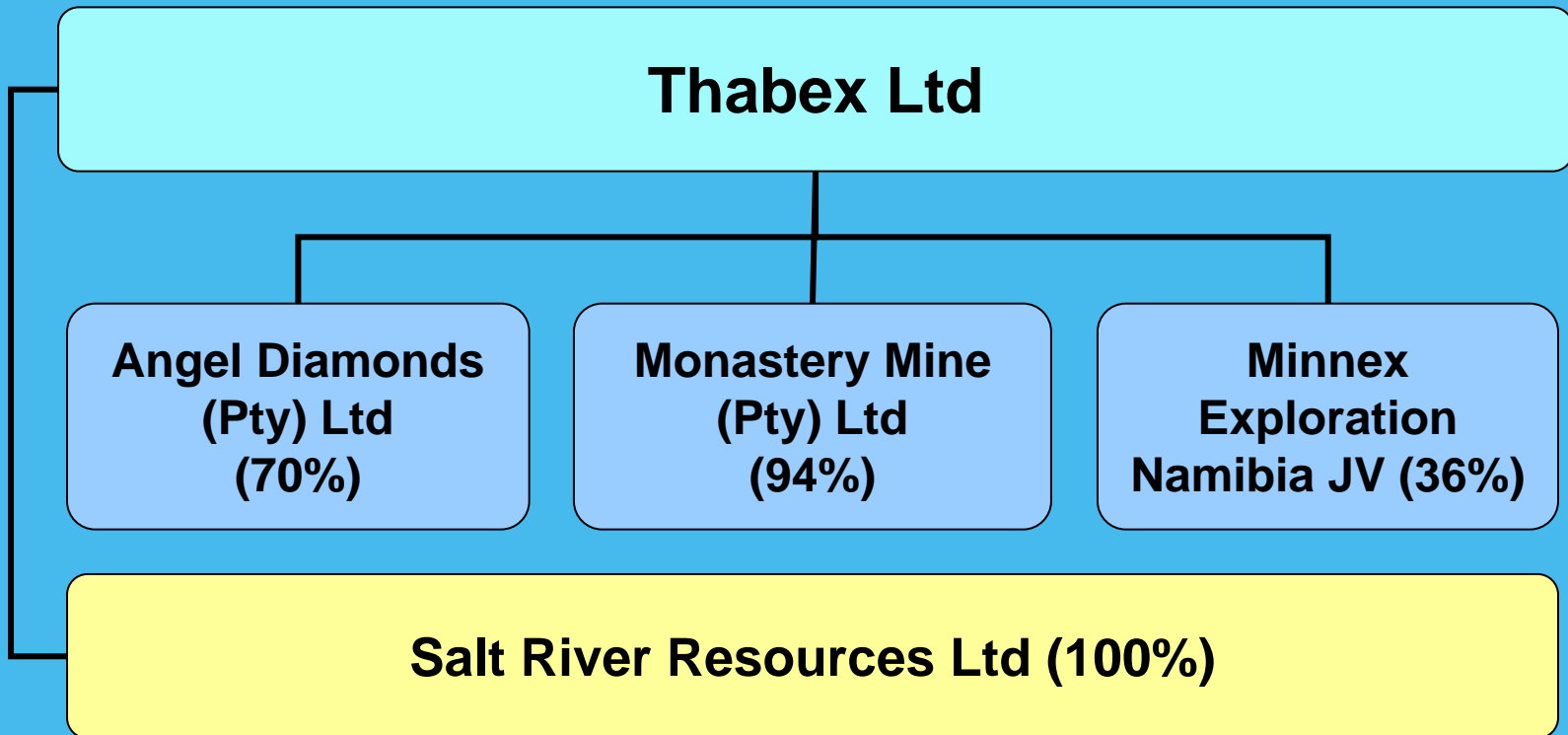




Junior Diamond Explorer Operating in Lesotho, South Africa and Namibia

Major Projects

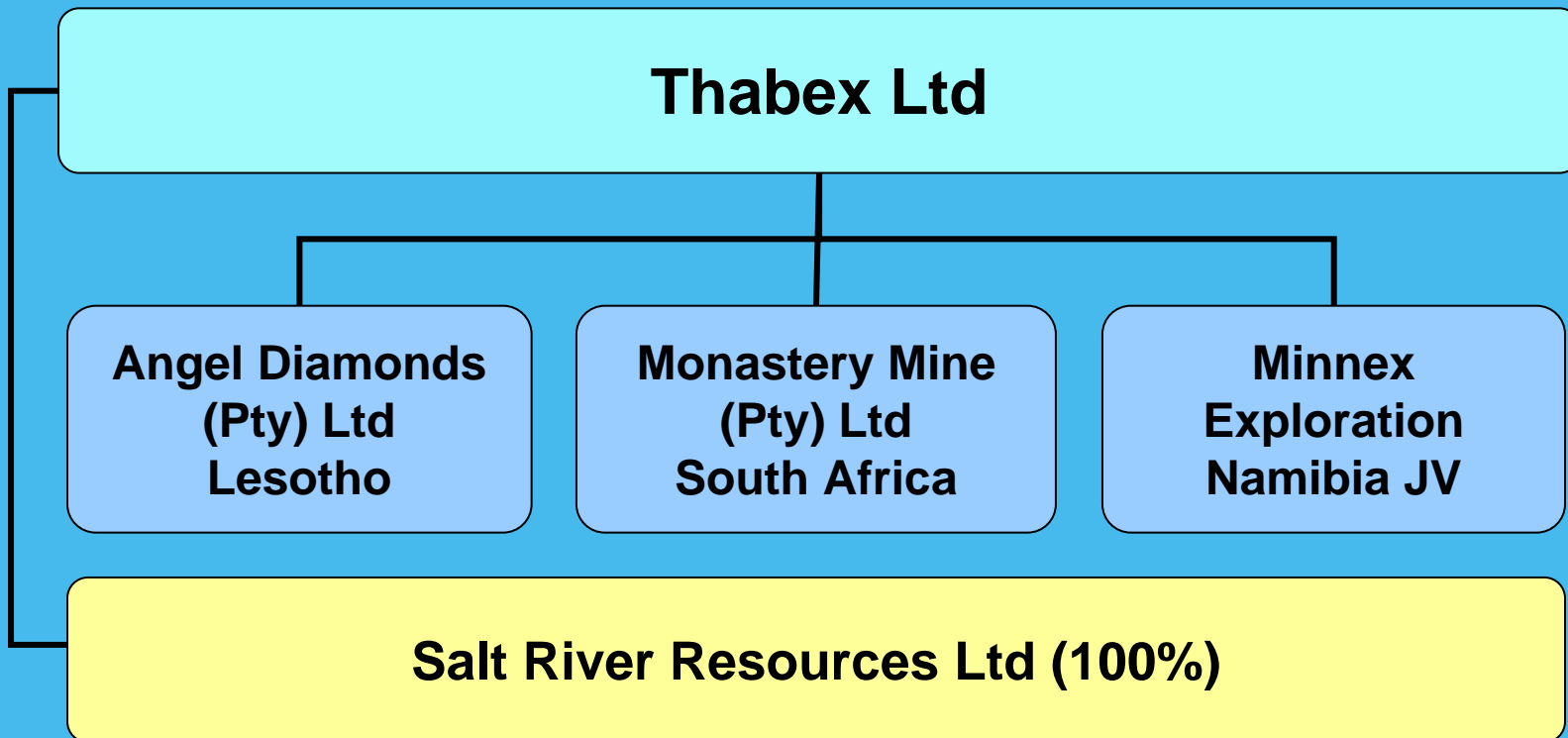


Thabex – JSE Code: TBX



- **Authorised share capital**
 - 100 000 000 ordinary shares at 10 cents each
- **Issued share capital**
 - 21 006 887 ordinary shares at 10 cents each
- **Liquidity - 15,7% past twelve months**
- **Major shareholders**
 - Ahmed Family (20.98%)
 - Saminco Ltd (10.42%)
 - Alizarin Investments Ltd (7.84%)
 - Dr JA Cruise (5.77%)
- **Free float – 62.83%**
- **Thabex is 21% BEE held**

Major Projects



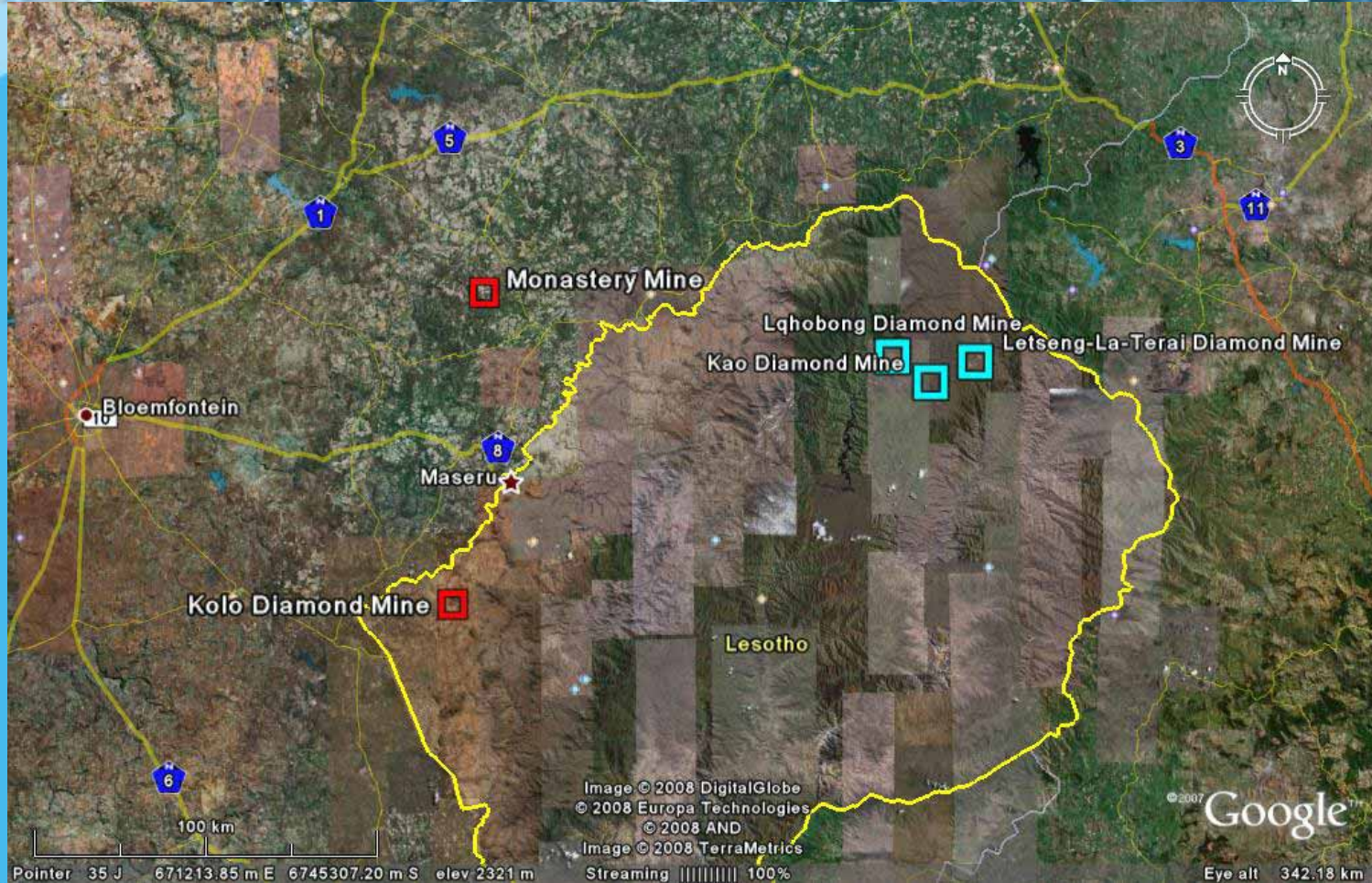
Major Projects



Thabex Ltd

**Angel Diamonds
(Pty) Ltd
14.5cph
Bulk sampling**

Location of kimberlite pipes



Angel Diamonds: Lease



Kolo Kimberlite – 1.2 ha



Blasted Kimberlite



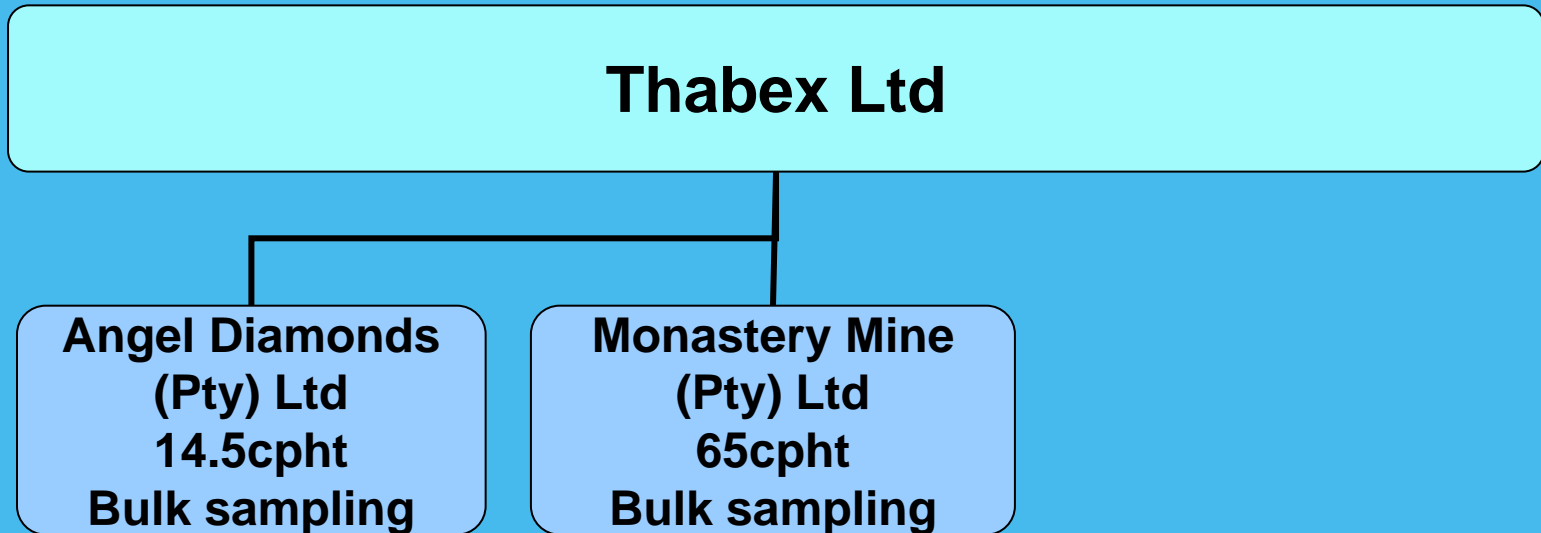
Angel Diamonds: 20tph DMS



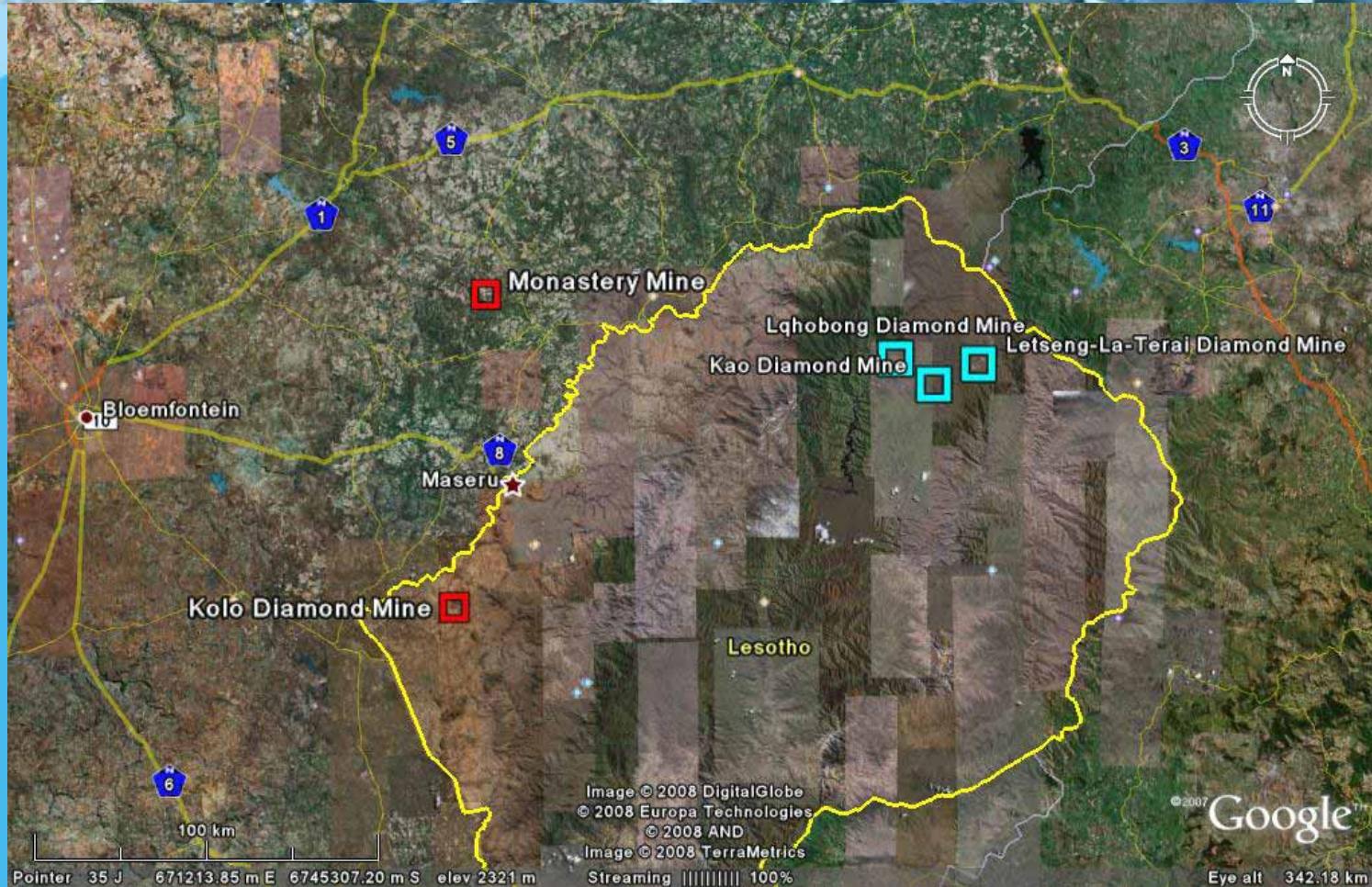
Angel Diamonds:20tph DMS



Major Projects



Monastery Mine



Monastery old 100tph DMS



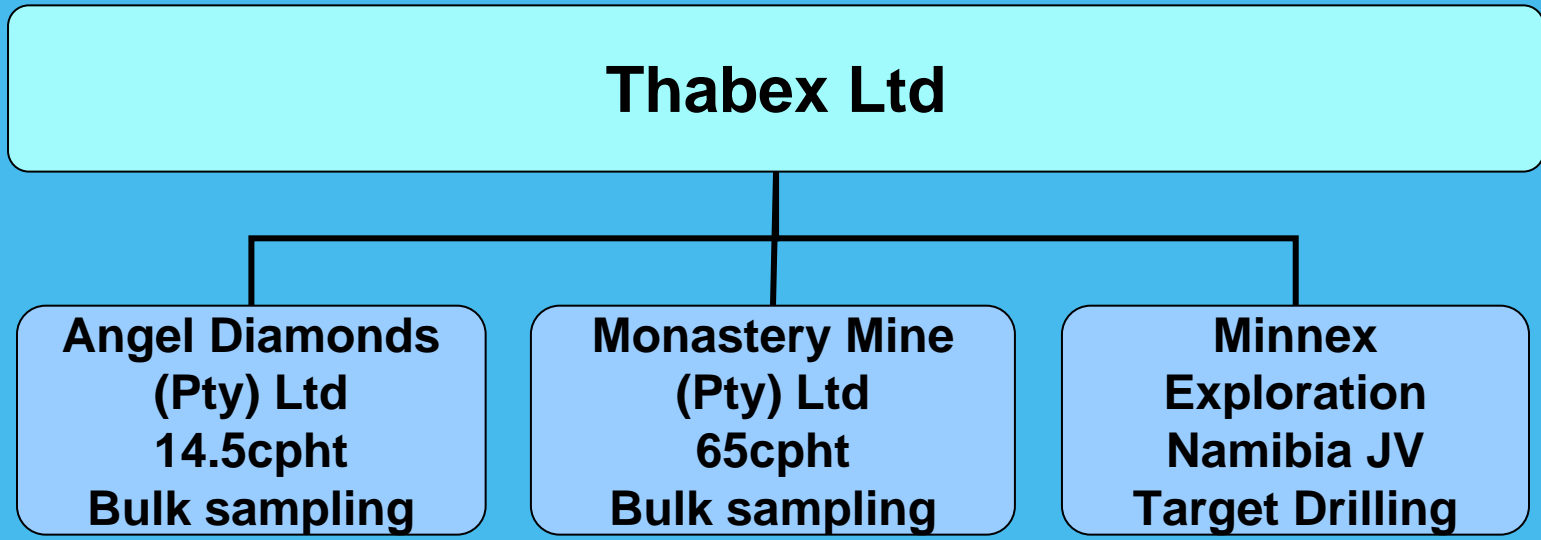
Monastery Kimberlite



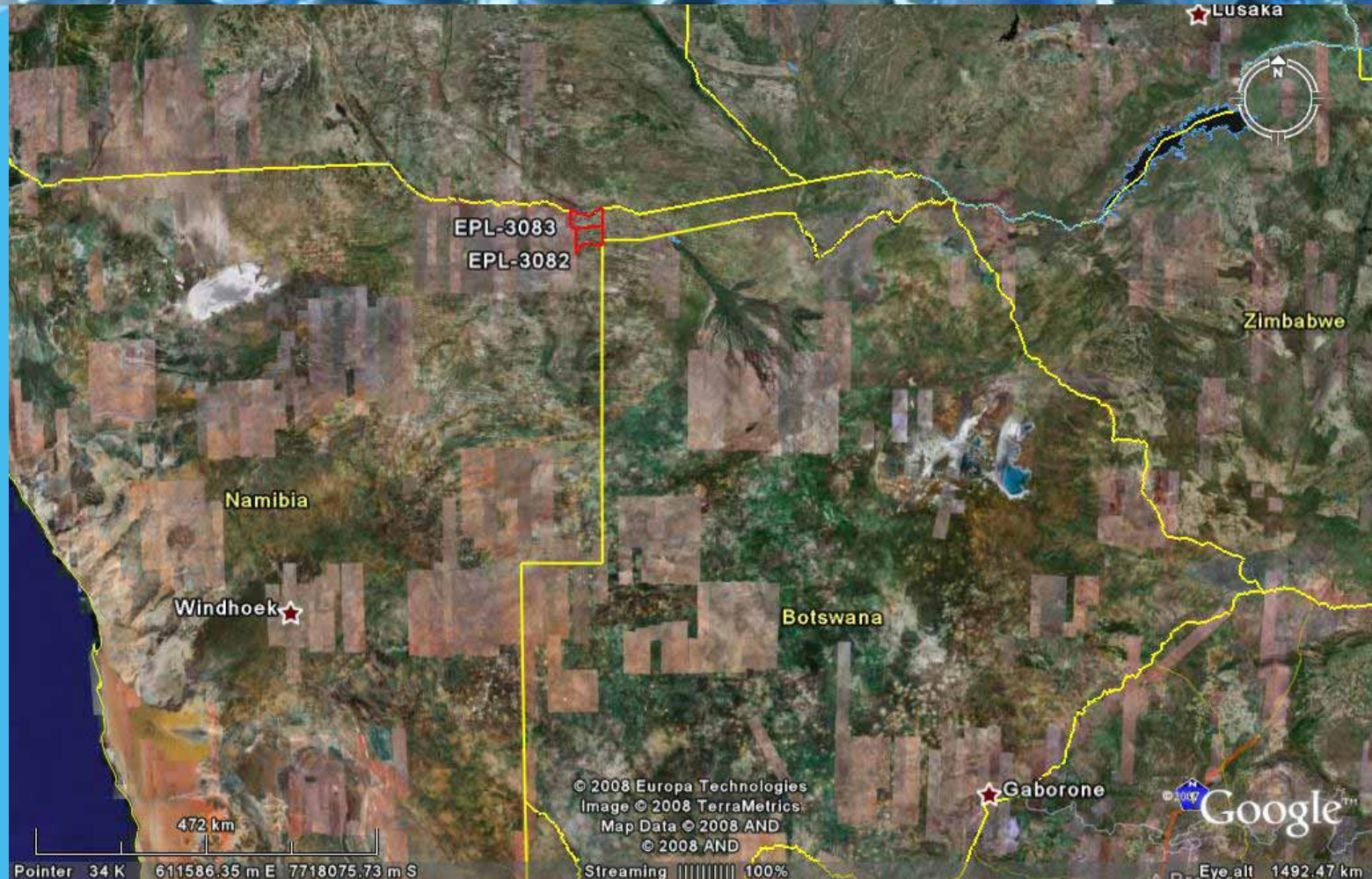
Monastery Kimberlite



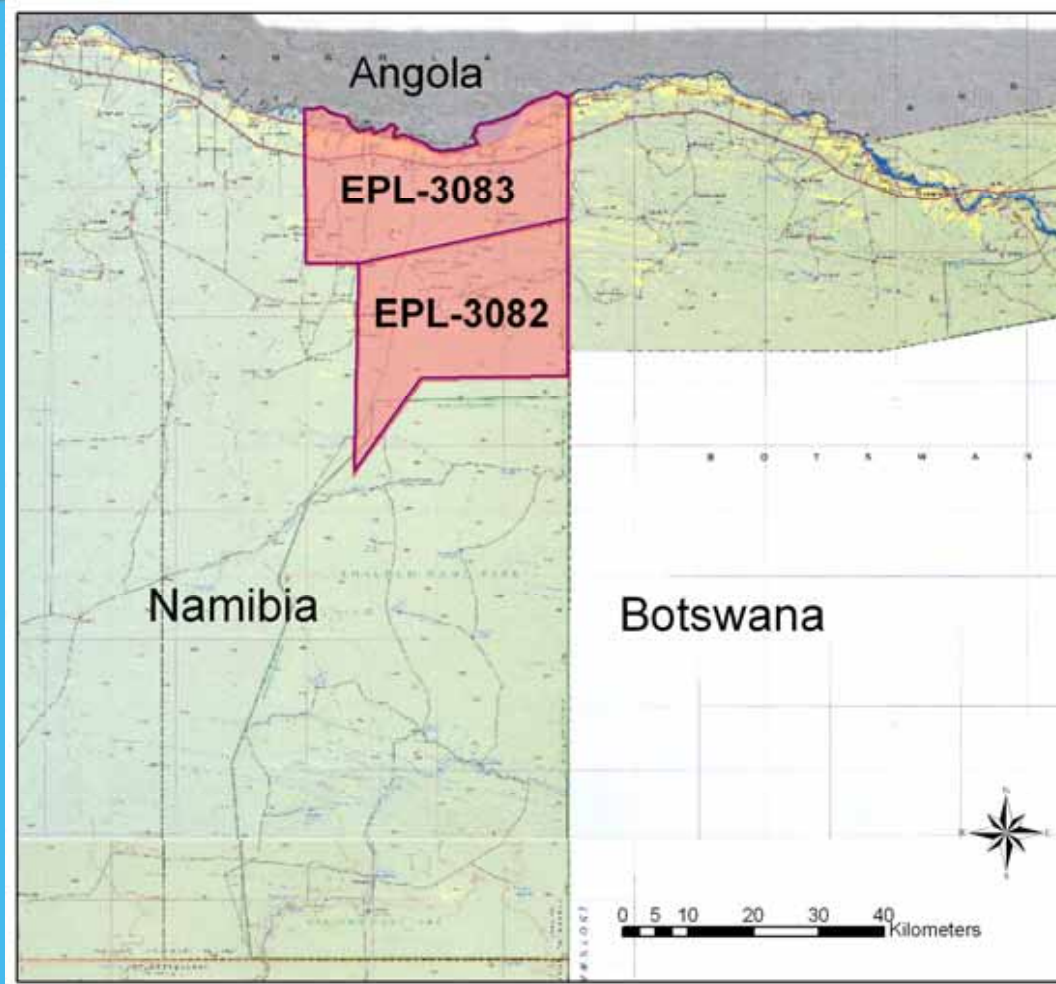
Major Projects



Minnex/Namdeb JV



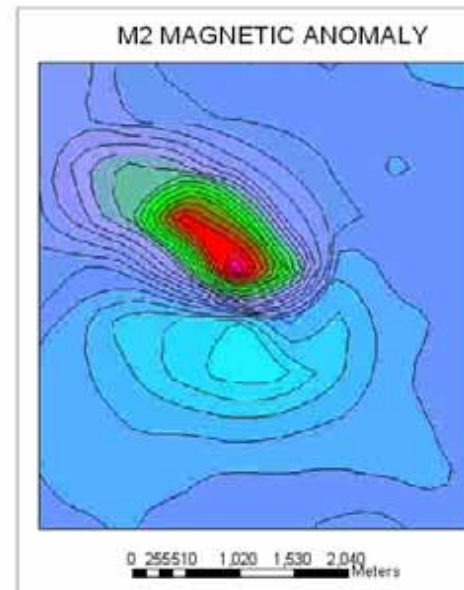
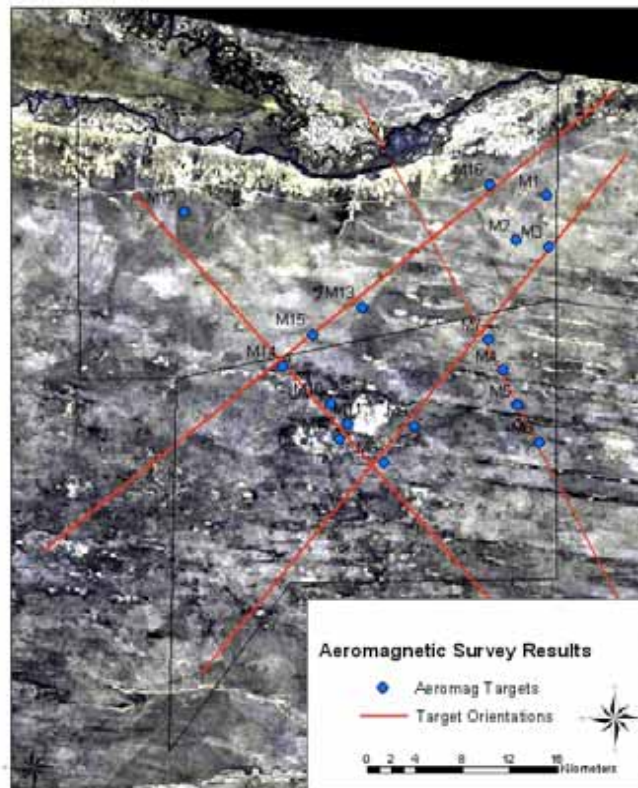
Ndiyona Kimberlite EPL's



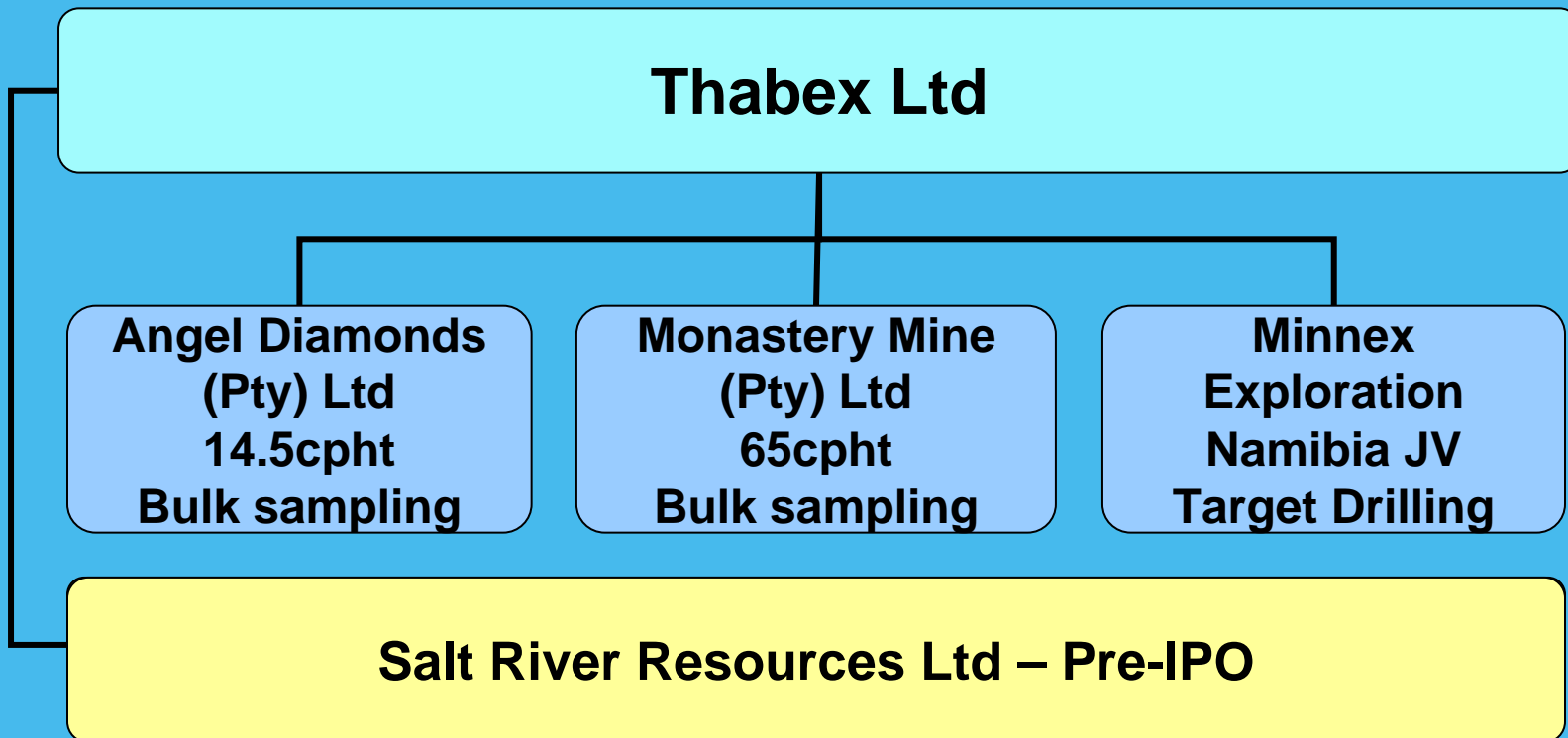
Diamond drilling



AEROMAG SURVEY RESULTS AND MAGNETIC ANOMALIES MINNEX EXPLORATION - EPL 3082 & EPL 3083



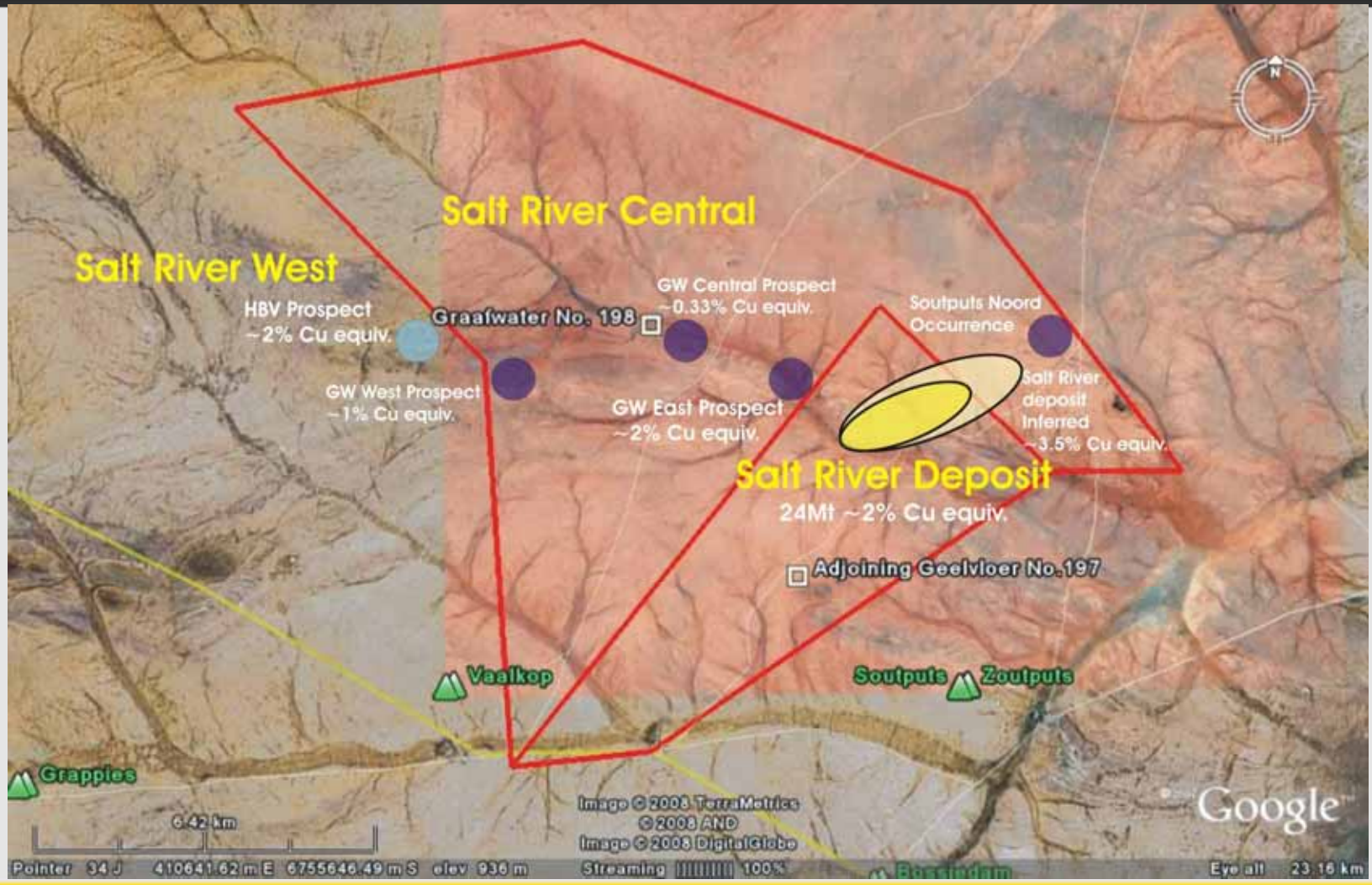
Major Projects



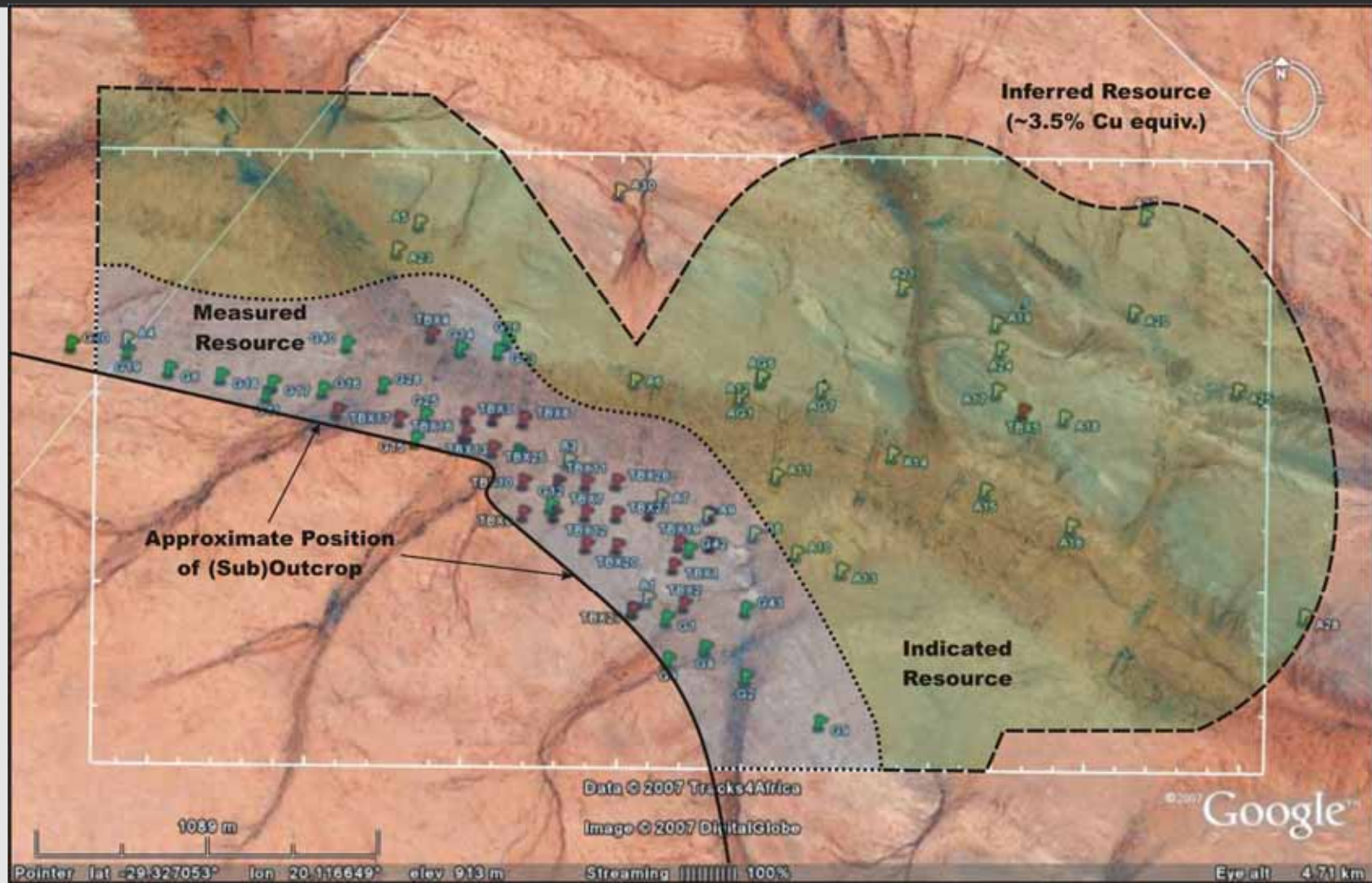
Base Mineral Project



Base Metal Resources

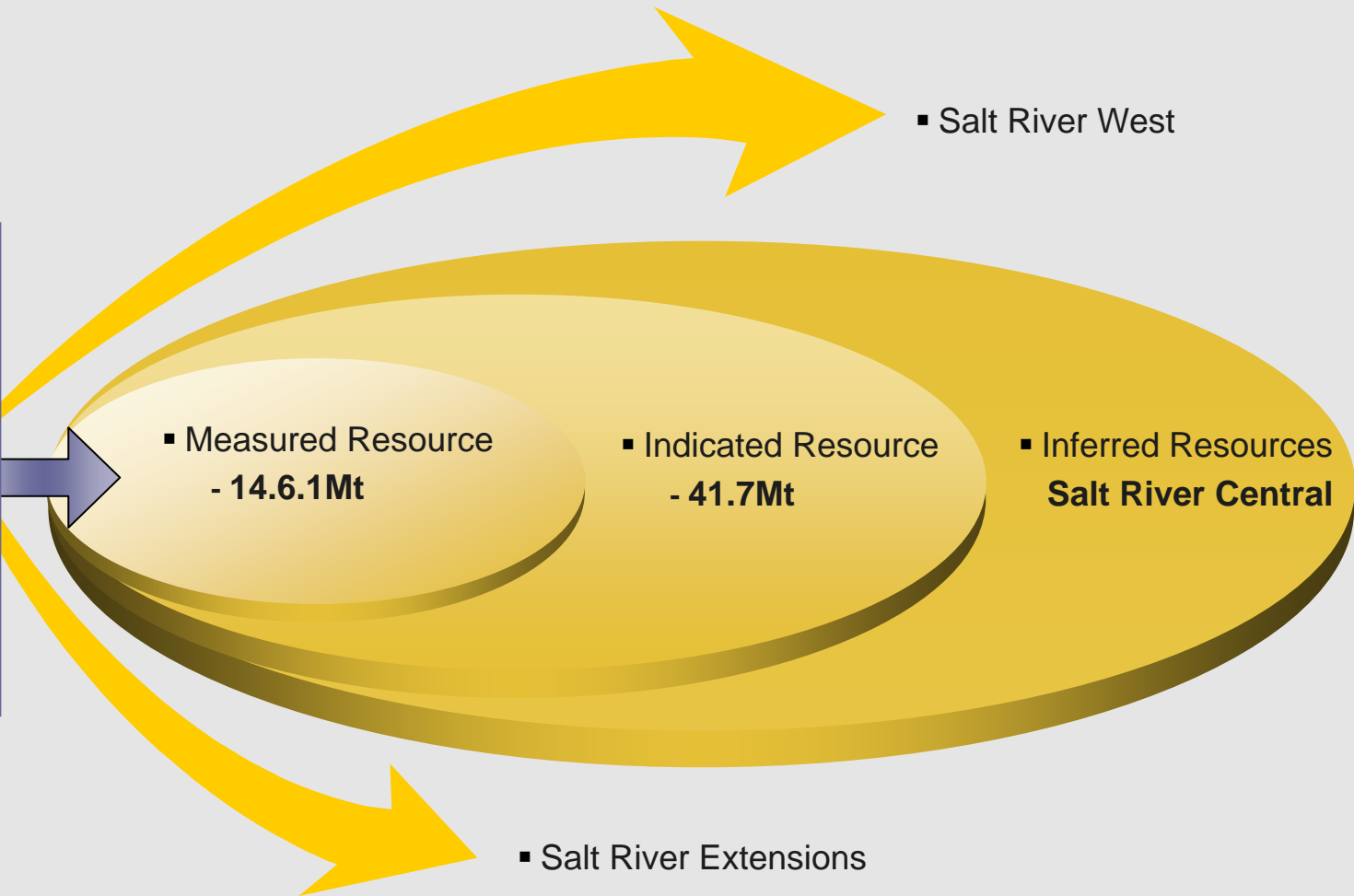


Base Metal Resources



Total Mineral Resource

Total Mineral Resource at Salt River:
56.1Mt at 0% Zn cut-off estimated by CSA Group in CPR dated 23 August 2007



Management team of SRR



Marius Welthagen

Dave Cowie

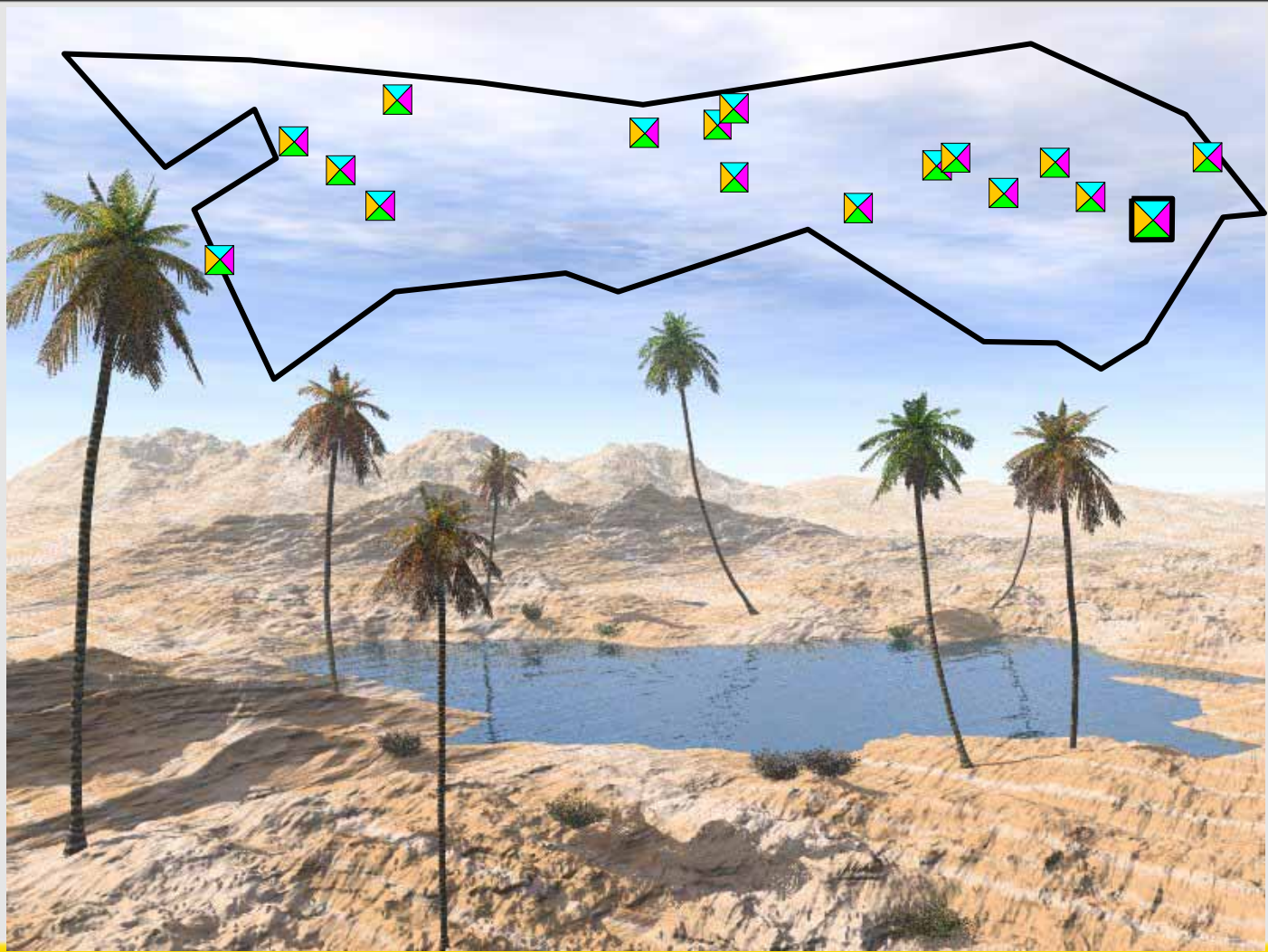
Dr Craig McClung

Dr John Cruise

Salt River Resources: a “Mineral Oasis”



Salt River Resources: a “Mineral Oasis”



The Future

Thabex to remains focused on its diamond projects for short term cash flow

**Angel Diamonds
(Pty) Ltd
14.5cpht
Bulk sampling**

**Monastery Mine
(Pty) Ltd
65cpht
Bulk sampling**

**Minnex
Exploration
Namibia JV
Target Drilling**

The Future

Thabex to remain focused on its diamond projects for short term cash flow

**Angel Diamonds
(Pty) Ltd
14.5cph
Bulk sampling**

**Monastery Mine
(Pty) Ltd
65cph
Bulk sampling**

**Minnex
Exploration
Namibia JV
Target Drilling**

**Salt River Resources Ltd – Large Base Metal deposit
planned to be listed separately on JSE and AIM after
completion of Bankable Feasibility**